

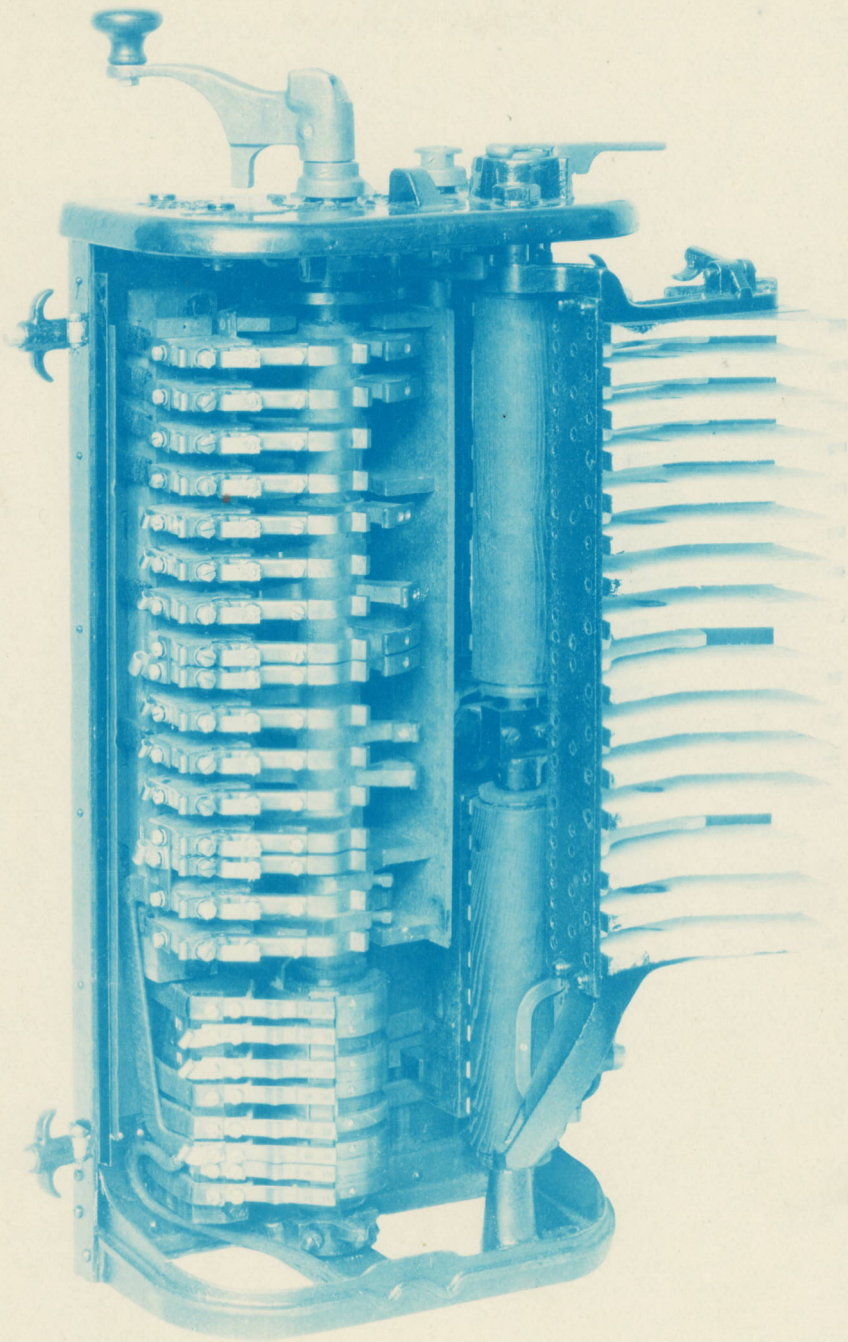
328302

TYPE B-54-A CONTROLLER.

INDEX E-353.7

4 12 20





328303

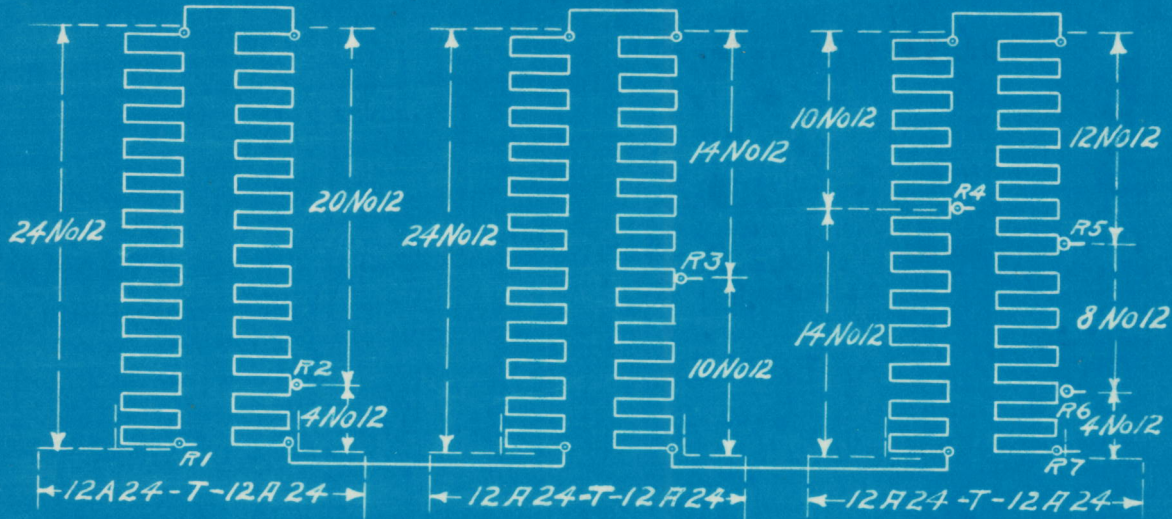
TYPE B-54-A CONTROLLER.

INDEX E-353.7

4 12 20



Connections of RG Rheostats for use with B18-AControllers



Resistance per Division

- R1 - R2 = 3.30 Ohms
- R2 - R3 = 3.15 "
- R3 - R4 = 1.80 "
- R4 - R5 = 1.65 "
- R5 - R6 = 0.60 "
- R6 - R7 = 0.30 "
- Total = 10.80 "

*J.G. Stewart*

Checked C.A.B.

Approved F. Case

17 June 1913

Engineering Dept.  
General Electric Company

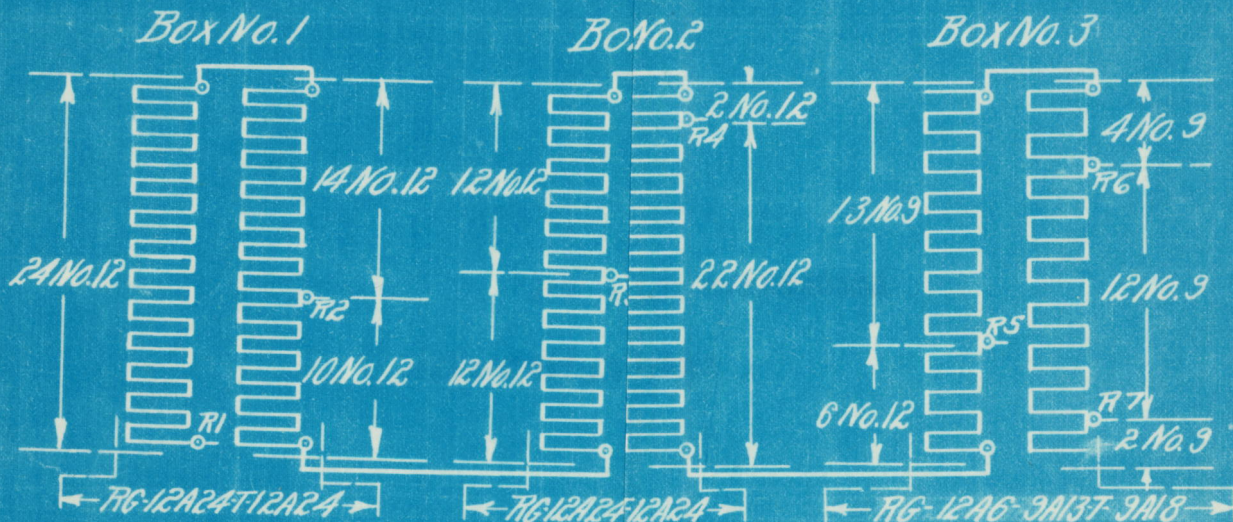
D.5.37675

1-4-2-11-12-243

H.G.



Connections of Tree RG Rheostats  
for use with B-18F Controller and Two Motors



Resistance per Division

- R1 - R2 = 2.81 Ohms
- R2 - R3 = 1.63 "
- R3 - R4 = 1.04 "
- R4 - R5 = 2.07 "
- R5 - R6 = 0.78 "
- R6 - R7 = 0.39 "
- Total for Power = 6.11 "
- " " Braking 8.92 "

2 Motor Equipment Gr 249  
B-18F Control

Wangan

0/17820

D.S. 35336

Checked C.A.B.

Approved J.E. Case

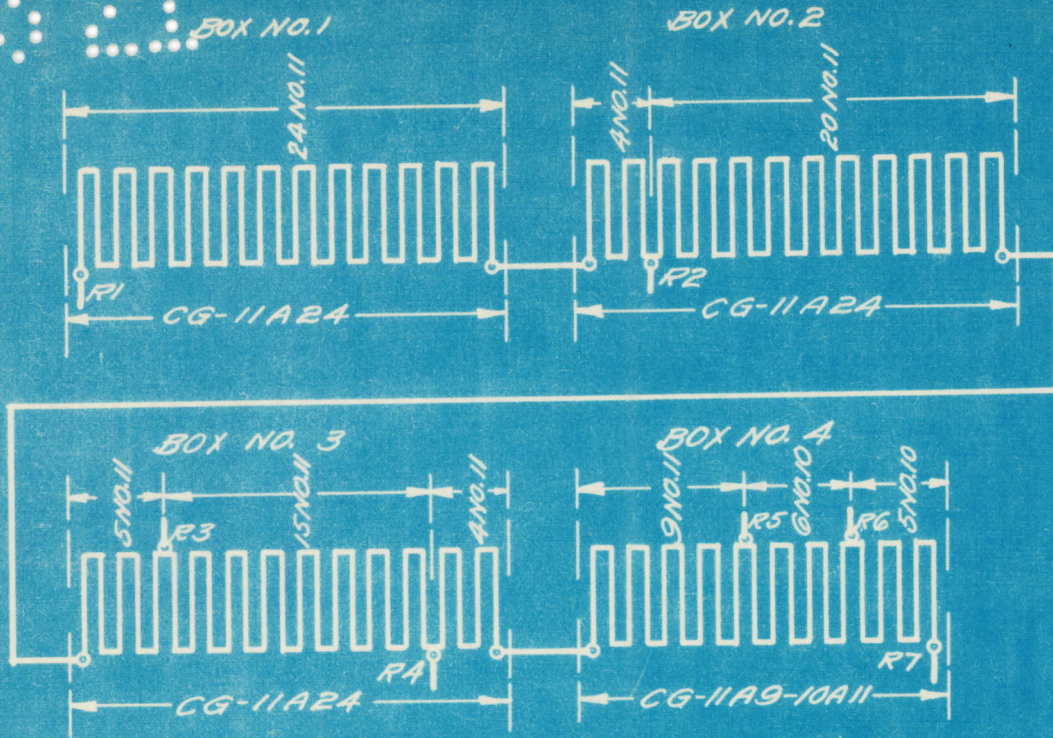
16 Feb. 1916

Engineering Dept.  
General Electric Company

D.S. 35336

51-21-21 000 A38 272  
G.M.





RESISTANCE PER DIVISION

$R1 - R2 =$	2.56	OHMS
$R2 - R3 =$	2.28	"
$R3 - R4 =$	1.36	"
$R4 - R5 =$	1.20	"
$R5 - R6 =$	.55	"
$R6 - R7 =$	.46	"

TOTAL = 8.41 OHMS

CONNECTIONS

CG RESISTORS FOR USE WITH B-35 CONTROLLER AND TWO MOTORS.

CHECKED *[Signature]* APPROVED R.W.Y. EQUIP. DEPT.

P.C. DRAWN BY *[Signature]* AUG. 20, 1920 INSPECTED BY *[Signature]* Aug. 21, 1920

K1922579

GENERAL ELECTRIC COMPANY SCHENECTADY N.Y.

K1922579